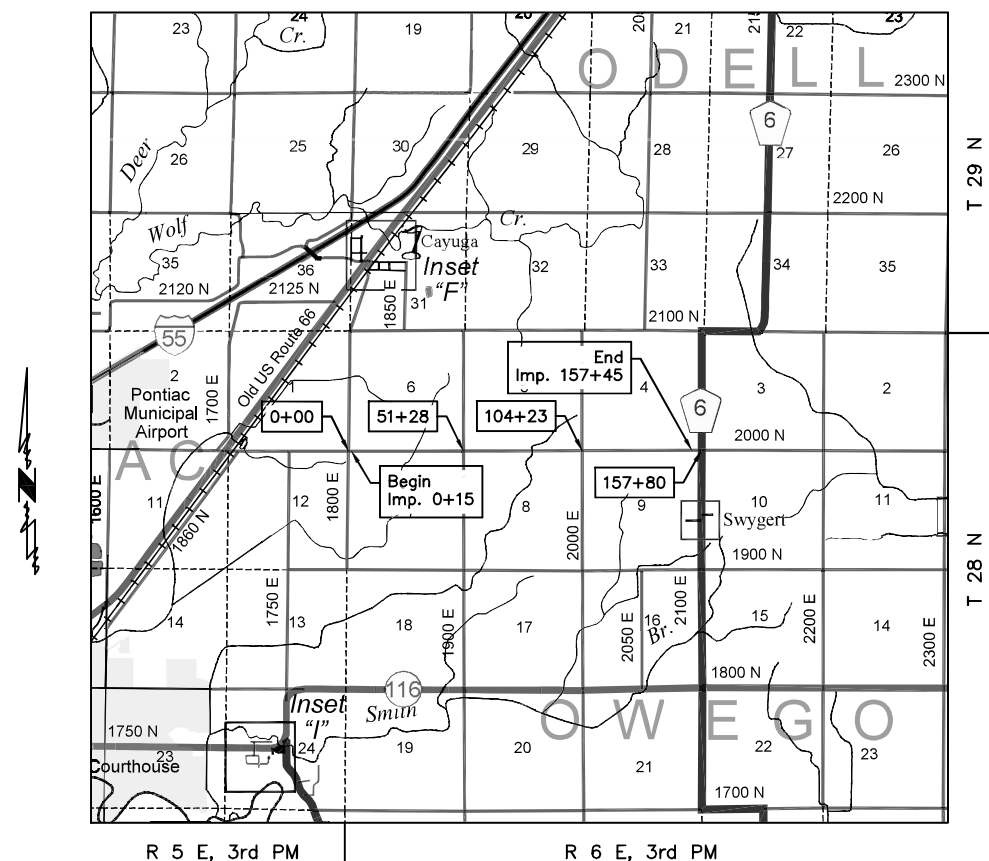
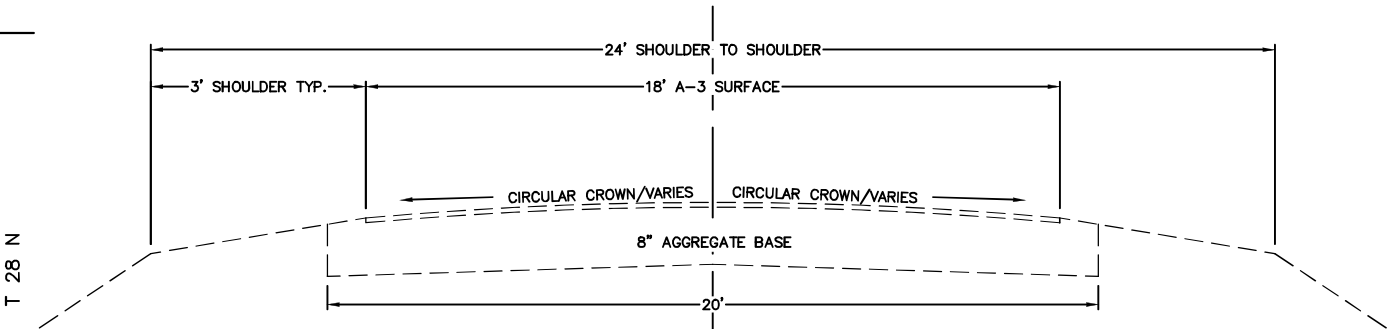


LIVINGSTON COUNTY
 OWEGO TOWNSHIP
 T.R. 113
 2000N RD
 SECTION 24-19101-06-SM
 NON-MFT

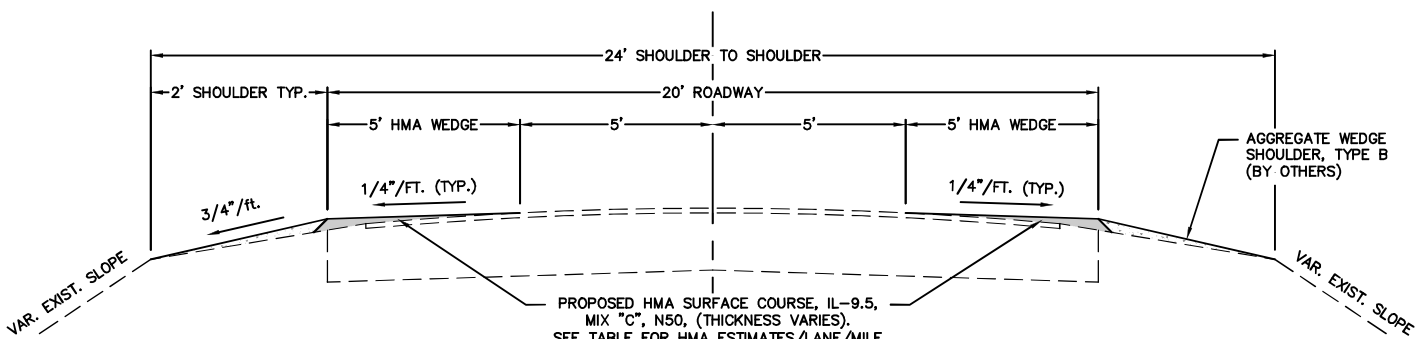
ROUTE NO.	SECTION	TOWNSHIP	TOTAL SHEETS	SHEET NO.
113	24-19101-06-SM	OWEGO	1	1



SCALE(MILES)
 GROSS LENGTH = 15,730' = 2.98 MILES
 NET LENGTH = 15,730' = 2.98 MILES



EXISTING TYPICAL CROSS SECTION (NTS)
 STA. 0+15 TO STA. 157+45



PROPOSED TYPICAL CROSS SECTION (NTS)
 STA. 0+15 TO STA. 157+45



2000N CLASS D, TYPE IV 4" SPL				
LOCATION		SIZE (FOOT)		AREA
STA	SIDE	LENGTH	WIDTH	(SQ YD)
0+15	LT/RT	25	X 20	56.0
29+65.	LT/RT	24	X 20	53.0
70+90.	LT/RT	18	X 20	40.0
82+50.	LT/RT	24	x 20	53.0
TOTALS				202

HMA EST. / LANE / MILE				
LOCATION		HMA		
STATION	SIDE	(TONS)		
0+15 TO 51+28	RT	178		
0+15 TO 51+28	LT	158		
51+28 TO 104+23	RT	207		
51+28 TO 104+23	LT	137		
104+23 TO 157+45	RT	230		
104+23 TO 157+45	LT	137		
TOTALS		1,047		

AGG. WEDGE SHLDR, TY. B EST. / LANE / MILE (BY OTHERS)				
LOCATION		AGG SHLDR		
STATION	SIDE	(TONS)		
0+15 TO 51+28	RT	203		
0+15 TO 51+28	LT	196		
51+28 TO 104+23	RT	234		
51+28 TO 104+23	LT	149		
104+23 TO 157+45	RT	229		
104+23 TO 157+45	LT	154		
TOTALS		1,165		

SUMMARY OF QUANTITIES

ITEM NO.	ITEM	UNIT	QUANTITY
40600290	BITUMINOUS MATERIALS TACK COAT	POUND	4,129
40604050	HMA SURFACE COURSE, IL-9.5, MIX "C", N50	TON	1,047
X4420170	CLASS D PATCH, TYPE IV, 4 INCH, SPECIAL	SQ YD	202

THIS PROJECT CONSISTS OF CLASS D, TYPE IV PATCHES, HMA SURFACE COURSE, IL-9.5, MIX "C", N50 WEDGE 5' WIDE TO FIX CROWN CORRECTION FROM THE INTERSECTION OF 2000N AND 1800E AND EXTENDS EASTERLY TO 2100E.

Mixture Use(s)	HMA Surface
Location(s)	ENTIRE PROJECT
PG Grade	PG64-22
Design Air Voids	4.0% @ N50
Mixture Composition	IL 9.5
Friction Aggregate	Mixture C
Density Test Method	Cores
Mixture Weight	112 # / s.y. / inch
Quality Management Program	QC/QA
Sublot Size	N/A
Material Transfer Device	NO

HIGHWAY STANDARDS

- 000001-08 STANDARD SYMBOLS, ABBREVIATIONS AND PATTERNS
- 442201-03 CLASS C AND D PATCHES
- 701301-04 LANE CLOSURE 2L, 2W SHORT TIME OPERATIONS
- 701306-04 LANE CLOSURE 2L, 2W SLOW MOVING OPERATIONS DAY ONLY ≥ 45MPH
- 701901-09 TRAFFIC CONTROL DEVICES

TRAFFIC DATA

TR 113/2000N - LOCAL ROAD
 DESIGN SPEED = 30 MPH-RURAL
 DESIGN ADT = 400

UTILITIES

CONTACT J.U.L.I.E. 811 or
 800-892-0123 BEFORE DIGGING



THESE PLANS WERE MADE BY ME OR BY A MEMBER OF MY STAFF WORKING UNDER MY PERSONAL SUPERVISION.

04/09/2024 DATE
 TRENT RUESTMAN, P.E.
 NO. 062.068070
 EXPIRATION DATE 11/30/25

04/09/2024 DATE
 Highway Commissioner