

LIVINGSTON COUNTY HIGHWAY DEPARTMENT

Clay A. Metcalf, P.E., *County Engineer*
Trent C. Ruestman, P.E., *Assist County Engineer*

1705 S. Manlove Street
Pontiac, Illinois 61764

Ph. (815) 842-1184
FAX (815) 842-3305

Addendum #1 – June 1, 2023

Livingston County Highway Department

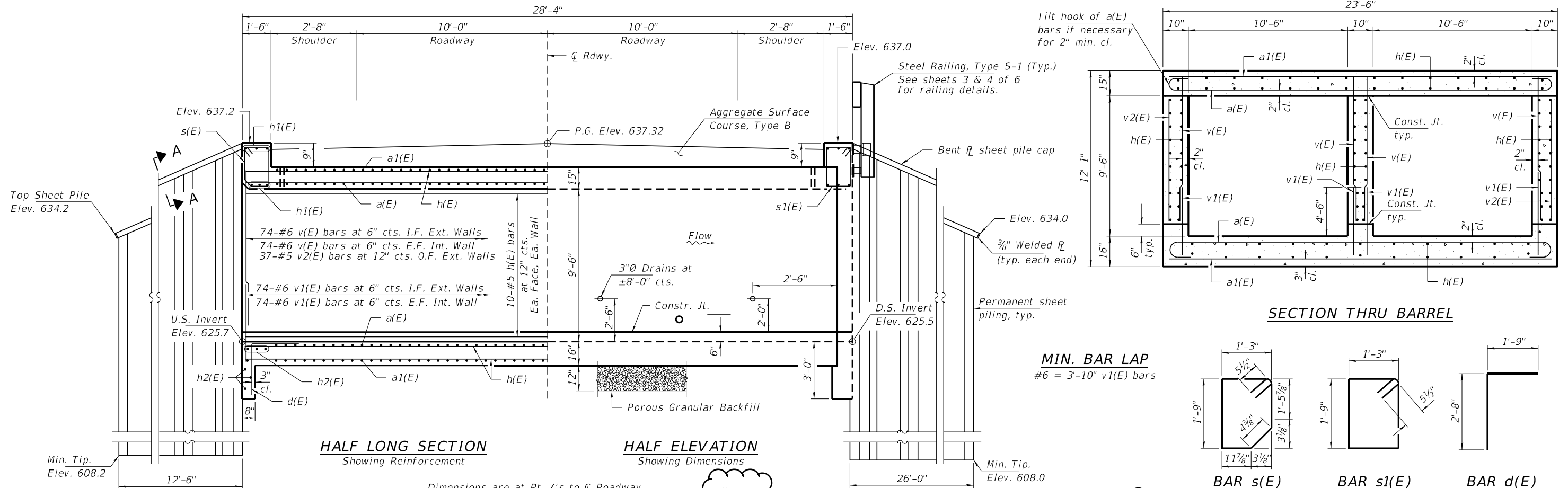
Section 21-00230-00-BR

Section 22-00844-00-BR

Summary of Changes: Remove Fabric Reinforced Elastomeric Mat from bid shown in CORNER DETAIL, Sheet 6 of the PLANS.

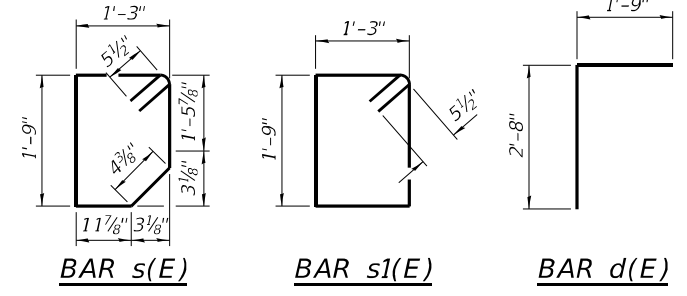
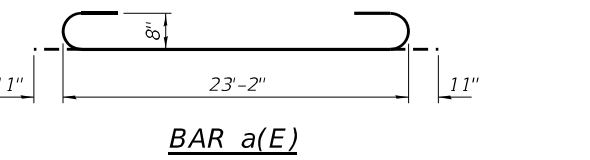
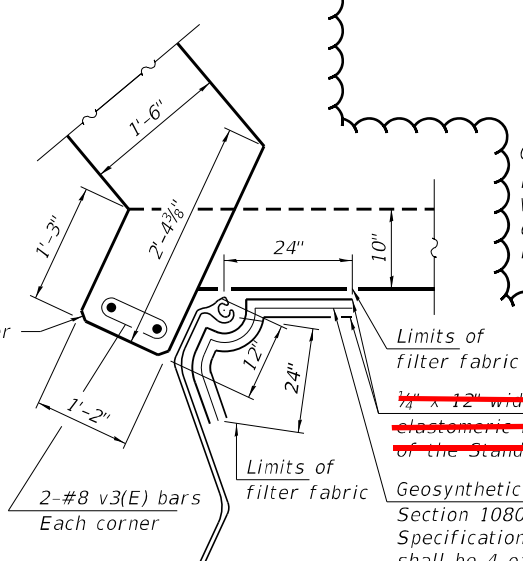
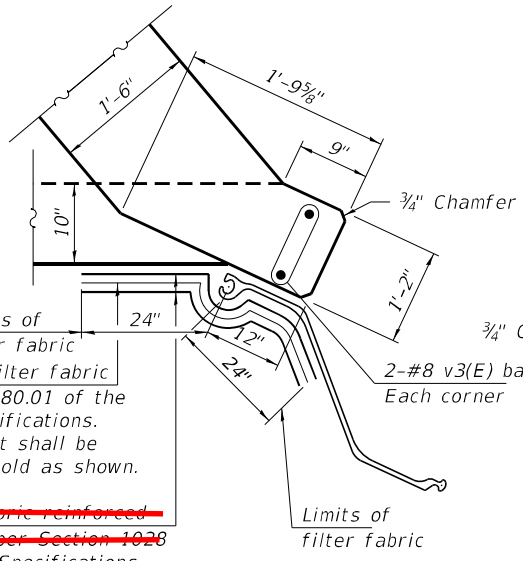
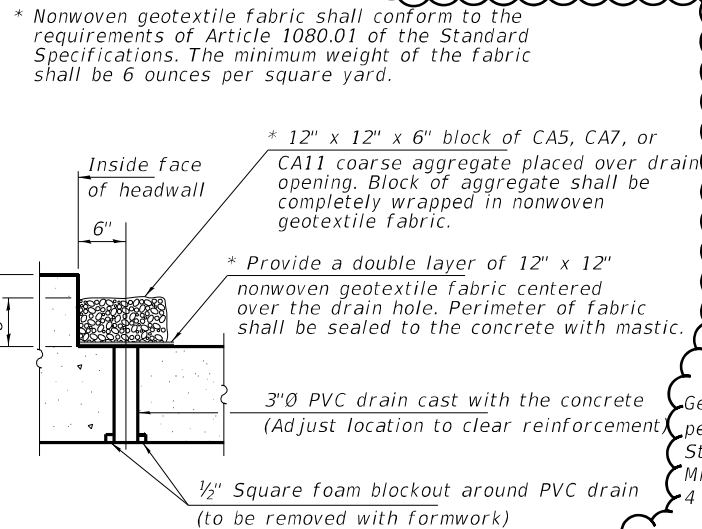
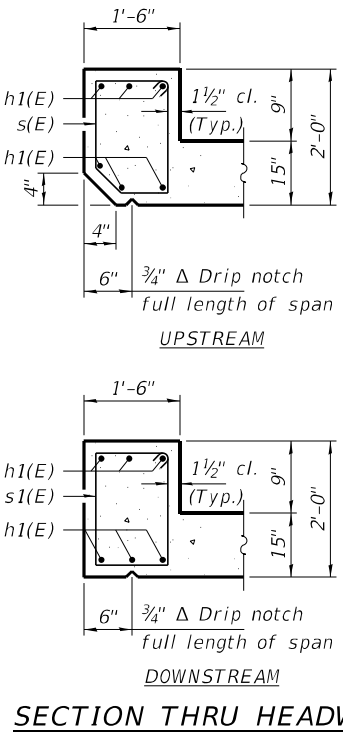
1. Replace Sheet 6 of the plans with attached Sheet 6.

NOTE: Read receipt or email response will confirm addendum received.



Addendum 1 05/31/2023
 The fabric reinforced elastomeric mat is deleted from the contract bid. The Geosynthetic filter fabric shall be included.

Notes:
 At the Contractor's option, a longer v1(E) bar may be ordered to replace the v(E) bar. No reduction in quantities shall be made for this substitution. The minimum effective section modulus of the permanent steel sheet pile wall shall be 26.2 in.³/ft and as shown on sheet 3 of 6. Sheet piling shall not be driven until the concrete strength has attained a minimum flexural strength of 650 psi or a minimum compressive strength of 3500 psi. The cost of furnishing and installing the bent sheet pile cap, filter fabric and ~~fabric reinforced elastomeric mat~~ shall be included in the cost of Permanent Sheet Piling.



DRAIN DETAIL
 * Nonwoven geotextile fabric shall conform to the requirements of Article 1080.01 of the Standard Specifications. The minimum weight of the fabric shall be 6 ounces per square yard.
 * 12" x 12" x 6" block of CA5, CA7, or CA11 coarse aggregate placed over drain opening. Block of aggregate shall be completely wrapped in nonwoven geotextile fabric.
 * Provide a double layer of 12" x 12" nonwoven geotextile fabric centered over the drain hole. Perimeter of fabric shall be sealed to the concrete with mastic.
 3" Ø PVC drain cast with the concrete (Adjust location to clear reinforcement)
 1/2" Square foam blockout around PVC drain (to be removed with formwork)

Geosynthetic filter fabric per Section 1080.01 of the Standard Specifications. Minimum weight shall be 4 oz./sq. yd. Fold as shown.
~~1/4" x 12" wide fabric reinforced elastomeric mat per Section 1026 of the Standard Specifications.~~

Limits of filter fabric
~~1/4" x 12" wide fabric reinforced elastomeric mat per Section 1026 of the Standard Specifications.~~
 Geosynthetic filter fabric per Section 1080.01 of the Standard Specifications. Minimum weight shall be 4 oz./sq. yd. Fold as shown.

FILE NAME = 220428-sh-culvert.dgn	USER NAME = gmetcalf	DESIGNED - S.T.M.	REVISED -	STATE OF ILLINOIS LIVINGSTON COUNTY HIGHWAY DEPARTMENT	CULVERT DETAILS STRUCTURE NO. 053-5535	T.R.	SECTION	COUNTY	TOTAL SHEETS	SHEET NO.	
HAMPTON, LENZINI AND RENWICK, INC. 3085 STEVENSON DRIVE, SUITE 201 SPRINGFIELD, ILLINOIS 62763 ILLINOIS PROFESSIONAL DESIGN FIRM L.S./P.E. SE CORP. 184.0009959	PLOT SCALE = \$SCALE\$	CHECKED - S.W.M.	REVISED -			1E	21-00230-00-BR/22-00844-00-BR	LIVINGSTON / LaSALLE	17	6	
PLOT DATE = 5/15/2023	DRAWN - R.D.H.	CHECKED - S.W.M.	REVISED -			NEWTOWN / OTTER CREEK R.D.					
						ILLINOIS					