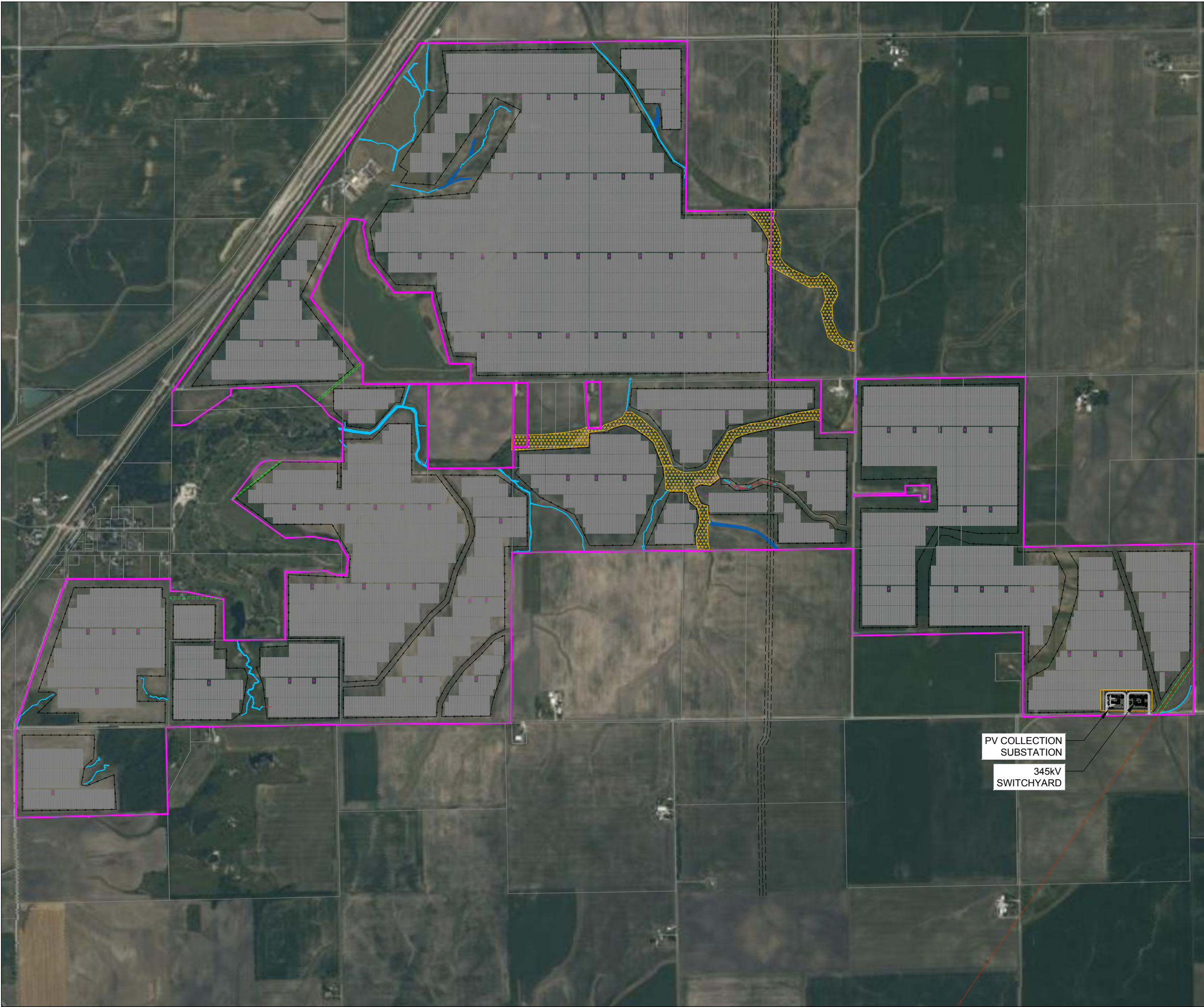


Y:\4246005\003 - Prairie Dock\Solar\Electrical\SHEET\100 OVERALL SOLAR ARRAY SITE PLAN.dwg | Plotted on: 10/28/2022 1:13 PM | by Christopher Carr



TOTAL QUANTITY SUMMARY		
SYSTEM DC RATING (MW)	389.90	
SYSTEM AC NAMEPLATE AT INV. (MVA)	324.00	
SYSTEM AC AT INV @ 0.95 PF (MW)	307.80	
SYSTEM AC GENERATED (MW) (ASSUMED 2.5% LOSSES AND INV. @ 0.95 PF)	300.00	
TARGET SYSTEM AC CAPACITY AT POI (MW)	300.00	
DC/AC RATIO (AT INVERTER NAMEPLATE)	1.20	
DC/AC RATIO (AT INVERTER @ 0.95 PF)	1.27	
DC/AC RATIO (2.5% LOSSES @ 0.95 PF)	1.30	
DC/AC (AT POI)(MWDC/TARGET MWAC)	1.30	
MODULE MODEL	HT-SAAE HT72-18X TRANSPARENT 550W	
MODULE TYPE	BIFACIAL	
GCR	37.5%	
PITCH (FT, CENTER TO CENTER)	20	
TOTAL MODULES	708,916	
MODULES PER STRING	26	
TOTAL STRINGS	27,266	
3-STRING TRACKERS	8,500	
2-STRING TRACKERS	893	
TOTAL MODULE DC RATING (MW)	389.90	
TOTAL NUMBER INVERTERS	90	
INVERTER MODEL	SUNGROW SG3600UD	
DC SYSTEM VOLTAGE (V)	1,500	
COLLECTOR SYSTEM VOLTAGE (KV)	34.5	
INTERCONNECTION VOLTAGE (KV)	TBD	
TRACKER MODEL	GAMECHANGE SOLAR GENIUS TRACKER 1P	
AZIMUTH	0°	
SITE DESIGN TEMPERATURE	33° C	
PROJECT AREA (GROSS, ACRES)	2,077.14	
TOTAL ACCESS ROAD LENGTH (FEET)	--	
TOTAL SECURITY FENCE	1,544.66 (ACRES)	164,463.92 (FEET)

LEGEND:

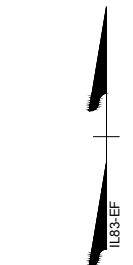
	PROJECT BOUNDARY
	SITE FENCE
	OVERHEAD POWER LINE
	GAS LINE
	50' GAS LINE SETBACK
	EASEMENT
	200' RESIDENTIAL SETBACK
	BRIDGE/CULVERT
	STREAMS
	WETLANDS
	CRP
	INVERTER PAD

NOTES:

1. SETBACKS:
- 1.1. 100 FEET FROM PARCEL BOUNDARIES
 - 1.2. 50 FEET FROM WETLANDS AND ROADS
 - 1.3. 200 FEET FROM RESIDENCES
 - 1.4. 50 FEET FROM GAS LINES

PV COLLECTION
SUBSTATION

345kV
SWITCHYARD



SCALE 1" = 750'

0 750' 1500'

Call at least two full working days
before you begin excavation.



TIMMONS GROUP
YOUR VISION ACHIEVED THROUGH OURS.

THIS DRAWING PREPARED AT THE
GILBERT OFFICE
890 W Elliot Rd, Suite 109 | Gilbert, AZ 85233
TEL 480.386.6058 FAX 504.560.1016 www.timmons.com

CLIENT

Competitive
Power Ventures

PROJECT NAME & ADDRESS

PRAIRIE DOCK SOLAR
LIVINGSTON COUNTY, IL

DATE	09/09/2022
PROJECT NUMBER	50893
DRAWN BY	TIMMONS GROUP
DESIGNED BY	TIMMONS GROUP

SEAL

PRELIMINARY

**NOT FOR
CONSTRUCTION**

REVISIONS	
#	DESCRIPTION
1	09/09/22 ISSUED - FOR REVIEW
2	
3	
4	

DRAWING DESCRIPTION

**OVERALL
SOLAR ARRAY
SITE PLAN**

34"x22" FULL SIZE
(17"x11" PLOTS ARE HALF SCALE)

SCALE	SHEET NUMBER
1" = 750'	E-100.01