

H.
Exhibit # Zehr 001

#1

From Montana.gov

Management Division

Wind Energy Development

Getting Started: Developing Wind Energy on State Land

Judith Gap Wind Farm

Join the Wind Energy Mailing List

- Unsubscribe



DNRC Home

Text Size

Judith Gap Wind Farm

"Montana's 'Gap' in wind production"

Sept. 20, 2004, after approval from the Montana land board, Wind Park Solutions Arcadia and the Montana Department of Natural Resources and Conservation signed a lease allowing a portion of a proposed wind farm to be built on school trust lands south of Judith Gap.

On October 7, 2005, the Judith Gap Wind Farm was dedicated, and power production is expected to start in late 2005.

Wind Turbine Information:

Blade length: 126 feet

Tower Height: 262 feet

Nacelle Weight: 108,000 lbs

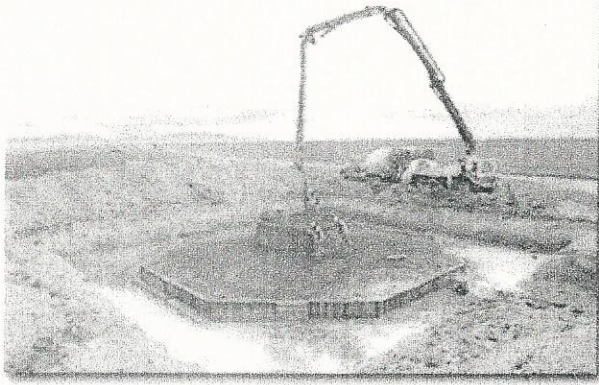
Blade Speed: Ten to 20 rpm

Cut-in Wind Speed: 7.8 mph

Full Production Wind Speed: 33.5 mph

Cut-out Wind Speed: 56 mph

Foundation: 48 feet wide by 7 feet deep



Pouring concrete to make one of the 48-foot-diameter, 7-foot-deep wind tower foundations.

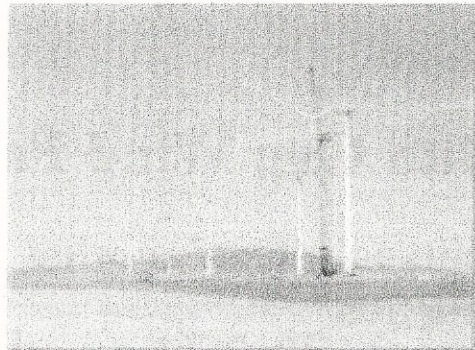
The farm sits on both sides of Highway 191 between Harlowton and Judith Gap and 13 of the 90, 1.5 megawatt towers will be on state land. According to terms of the lease the project will contribute nearly \$20,000 to the school trust for a one-time installation fee, and future revenues range from about \$50,000 to 60,000 annually depending on the volume of power produced.

The power generation nacelles sit more than 250 feet in the air atop a column built of three, 85-foot segments. Each of the three fiberglass blades is 126 feet long, which means at the top

of its arc, each blade tip will be nearly 400 feet in the air.

According to a wind power map for Montana, the wind farm is in a Class 4 and Class 5 wind area, with average wind speeds from 15.7 to 17.9 miles per hours at 50 meters (162.5 feet).

These types of turbines start spinning when the wind gets above about 6 miles per hour, and power production begins at 7.8 mph. Because of inconsistencies in the way the wind blows, wind turbines generally work at 30% of name plate capacity; these turbines run at maximum capacity at 33.5 mph. In high winds of 56 mph or more the turbines shut down to protect the turbine.



A large crane puts the blades on Judith Gap Wind Farm tower number 96. [Sept. 1, 2005]

The project, which was developed in large part by Big Sandy, Mont., farmer Bob Quinn, was sold to Invenergy in early 2004. Invenergy is a Chicago-based "energy investment company focused on the development, acquisition and management of large-scale power generation assets."



A side view of the 128-

foot-long fiberglass blades, still in its green, metal shipping frame. [Sept. 1, 2005]

In March 2005 Invenergy got approval by a 4-1 vote from the Montana Public Service Commission to sell power to NorthWestern Energy, a critical component to the project's success. The 20-year contract has Invenergy selling their power to NorthWestern Energy for \$31.75 per megawatt hour.

Upon completion the project anticipates generating about 150 megawatts of power from 90 turbines and will provide about 7 percent of the electricity needed to serve NorthWestern's 300,000 customers in Montana.

Invenergy, LLC.



Bob Quinn speaks at the Judith Gap Wind Farm dedication, October 7, 2005.



GCT-PH1

Population, Housing Units, Area, and Density: 2010 - County -- County Subdivision and Place

2010 Census Summary File 1

NOTE: For information on confidentiality protection, nonsampling error, and definitions, see <http://www.census.gov/prod/cen2010/doc/sf1.pdf>.

Geography: Wheatland County, Montana

Geographic area	Population	Housing units	Area in square miles		
			Total area	Water area	Land area
Wheatland County	2,168	1,197	1,428.24	5.05	1,423.19
COUNTY SUBDIVISION AND PLACE					
Harlowton CCD	1,586	874	811.51	1.81	809.70
Harlowton city	997	585	0.58	0.00	0.58
Remainder of Harlowton CCD	589	289	810.93	1.81	809.12
Judith Gap-Shawmut CCD	582	323	616.73	3.23	613.49
Judith Gap city	126	83	0.38	0.00	0.38
Shawmut CDP	42	34	2.15	0.00	2.15
Remainder of Judith Gap-Shawmut CCD	414	206	614.20	3.23	610.97
PLACE					
Harlowton city	997	585	0.58	0.00	0.58
Judith Gap city	126	83	0.38	0.00	0.38
Shawmut CDP	42	34	2.15	0.00	2.15

From Judith Gap Website

Welcome to Judith Gap, Montana!

Judith Gap is located in northern Wheatland County in central Montana. It is nestled between the Snowy Mountains to the east, the Little Belts to the west and there is a wonderful view of the Crazy Mountains to the south. Because of this prime location, hunters have been rewarded with an abundance of elk, antelope, mule deer, and white tail.

Located on MT Hwy 3/US Hwy 191, we are 18 miles from Harlowton, 39 miles from Lewistown, 110 miles from Billings and 110 miles from Great Falls. Area attractions include Crystal Lake, the Ice Caves, Judith Gap Wind Farm. Close fishing access can be found at Deadman's Basin, Martinsdale Reservoir and Ackley Lake.

About the Town itself, we have a small population of around 126 people. In 2011, the Town completed an extensive construction project by replacing the Town's water and sewer lines.

Our school, built in 1911, just celebrated its centennial. It is still going strong. In addition to core classes, the school boasts a strong AG and music program. For more information, please visit the school's website: www.judithgap.k12.mt.us

Whether you are here to stay or just for a visit, we welcome you!

City Business



The Town of Judith Gap is run by a Commission-Executive form of government (council-mayor). The four city council seats and the mayor are chosen by election with four-year terms. (MCA 7-3-201)

Judith Gap city council meets every second Wednesday of the month at 7:00 p.m. at the City Complex. The public is welcome and encouraged to attend the meetings. Agendas for meetings are posted at the Post Office, Judith Gap Oil, and the bulletin board outside the city office

The office is located on the south side of the City Complex. (Big red building that houses the fire trucks and ambulance, across from the post office). The office hours are Thursdays from 9:00 a.m. to 3:00 p.m. If you have any questions regarding ordinances, water/sewer billing, or any other information about the town, stop in! For after hours, there is a messaging system.

Contact Information

Town of Judith Gap
601 Meagher Street
PO Box 157
Judith Gap, MT 59453
(406)473-2249
Fax: (406)473-2243
townofjudithgap@gmail.com

City Government/Employees

Mayor:	Dave Foster
City Council:	Jack Miller
	Jeff Miller

Clerk/Treasurer: Rita Swartz
Ruth Walter
Kim Bradley

City Employees: Doug Wight
Gerry Wight

Welcome to the Judith Gap School's Website

2015-2016

Positions

Written by Annette Hart

Thursday, 05 February 2015 12:34

Positions Open for the 2015-2016 School Year

Judith Gap School is looking to fill a

- full-time 5-12 math,
- full or part-time music or fine arts.

An applicant with one of these endorsements, or a combination of others, is encouraged to apply.

Job Description

The math position will include teaching 5th through 12 grade math and RtI instruction.

The music position will include general elementary music classes and intermediate band and choir for 5th grade through 12th grade.

The art position is flexible regarding focal areas and can include grades Preschool through 12th grade.

Both positions may also include aide duties, or use of other endorsements, to create a full-time position.

Application Process

If you are interested in applying, create an account and complete the online application available [here](#). Contact Judith Gap School when the application is complete, then please send:

- one letter of interest
- one copy of teaching certificate
- one copy of college transcripts
- three letters of recommendation

About Us

Judith Gap is a small, rural community in central Montana. The town has a post office, gas station/convenience store, repair shop, bar, café, assisted living facility, and two churches. The nearest location for groceries is about twenty miles away. Billings, Bozeman, and Great Falls are all within a two to two-and-a-half hour drive. With regards to living expenses, rent runs about \$250-\$400 a month for houses or apartments in town based on availability. Opportunities for fishing, hunting, and other outdoor activities are available within the local area. This is a tight knit community that is very supportive of the school and is proud of the quality education that is provided.

The average class size in the high school is one to two students, so we expect teachers to be flexible and schedule according to the needs of the students. Since our numbers are small, we like to have the students in classes together to be able to socialize. We have high expectations from both students and teachers, not only in regards to education, but good manners and model citizenship. Technology is expected to be fully integrated into the curriculum. Teachers have Smart Boards in their classrooms and the school provides high school students with laptops, junior high students with Chromebooks, and elementary students with iPads.

Current first-year salary is \$25,000. Benefits include free lunch, paid single health insurance, four days of personal leave, and twelve days of sick leave. Coaching and bus driving may be available.

Applicants will be notified of interview dates and preference will be given to those applicants who interview in person, as well as those with additional teaching endorsements.

This webpage is updated frequently. Last update 2/5/2015.

Last Updated on Thursday, 05 February 2015 15:43

2014-2015

School Year



Written by Patti Lemmon

Wednesday, 27 August 2014 07:27

Last Updated on Wednesday, 27 August 2014 14:17

Judith Gap

231

4.3 miles

0.6 miles

1.2 miles





